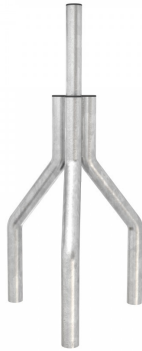
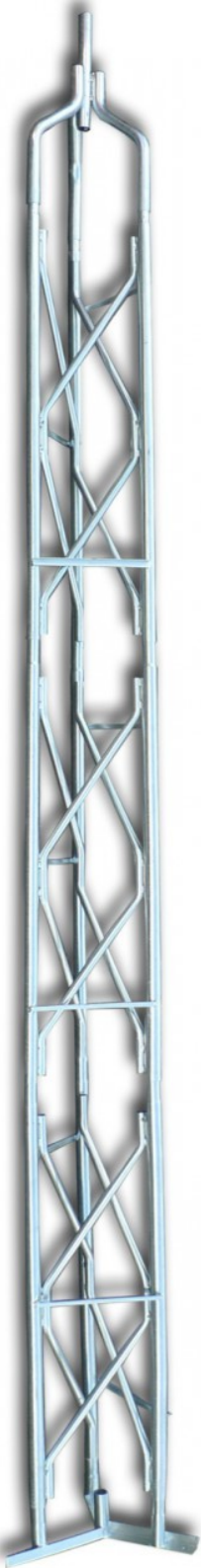


# Steel Lattice Towers

## Self Supporting

### 5.2m - 12.7m Self Supporting Steel Lattice Towers

- Hot Dipped Galvanized Steel
- Max Weight Loading: 60kg
- Max Suggested Area on top of Mast: 0.5m<sup>2</sup>
- Easy assembly, push-on sections.



#### Tower Top - Specifications:

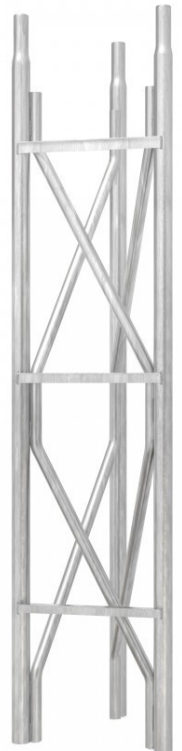
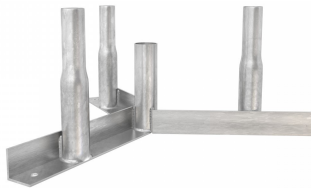
- Full Height: 715mm
- Weight: 2.45kg
- Tube Diameter: 38mm x 1.5mm

#### Tower Mounting Section - Specifications:

- Full Height: 1500mm
- Weight: 10.5kg
- Tube Base Diameter: 38mm x 1.5mm
- Tube End Diameter: 25mm x 1.5mm

#### Tower Base - Specifications:

- Height: 205mm
- Weight: 2.45kg
- Tube Base Diameter: 38mm x 1.5mm
- Tube End Diameter: 34mm x 1.5mm
- Height of Center Tube: 150mm



#### Prices:

- 5.2m Steel Lattice Tower - £496.49**
- 6.7m Steel Lattice Tower - £743.49**
- 8.2m Steel Lattice Tower - £914.99**
- 9.7m Steel Lattice Tower - £1007.49**
- 11.2m Steel Lattice Tower - £1196.99**
- 12.7m Steel Lattice Tower - £1357.49**

**All prices include VAT & UK Mainland Delivery.**  
**Delivery approx 2 weeks**

*We also ship to Europe and beyond.  
Contact us for shipping quote.*

#### Jabber Products Limited

Unit 4, Skitts Manor Farm, Moor Lane, Marsh Green, Kent, TN8 5RA, United Kingdom

+44 (0)1732 387 404 • sales@jabberproducts.co.uk

Company Reg: 11228779 • Vat no: 288660454