

Aluminum Lattice Towers

Self Standing

3m - 8.5m Self Standing Aluminum Lattice Towers

Specifications:

- Max Weight Loading: 150kg
- Max Suggested Area on top of Mast: 1.5m²
- Tube wall thickness: 1.5mm
- Tube Diameter: 35mm
- Cross section dimensions 260 x 260 x 260mm

Tiltable base section to be bolted into concrete base and sections bolt together to create secure lightweight structure, with no need for guy wires.

Prices:

3m Self Standing Lattice Tower - £843.99

2 x 1500mm lattice tower sections & installation kit

4.5m Self Standing Lattice Tower - £1138.49

3 x 1500mm lattice tower sections & installation kit

5.5m Self Standing Lattice Tower - £914.99

2 x 1500mm lattice tower sections, 2 x 1500mm aluminum extension pole & installation kit

6m Self Standing Lattice Tower - £1405.49

4 x 1500mm lattice tower sections & installation kit

7m Self Standing Lattice Tower - £1248.99

3 x 1500mm lattice tower sections, 2 x 1500mm aluminum extension pole & installation kit

8.5m Self Standing Lattice Tower - £1537.99

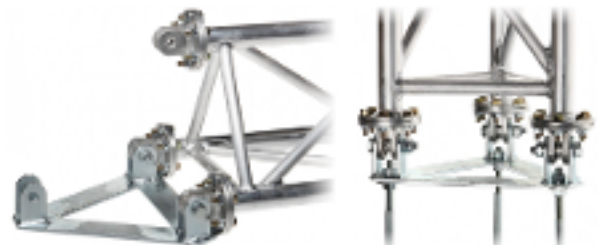
4 x 1500mm lattice tower sections, 2 x 1500mm aluminum extension pole & installation kit

All prices include VAT & UK Mainland Delivery.
Delivery approx 2 weeks

*We also ship to Europe and beyond.
Contact us for shipping quote.*



Easily Bolt each Section



Tiltable Base Section

Jabber Products Limited

Unit 4, Skitts Manor Farm, Moor Lane, Marsh Green, Kent, TN8 5RA, United Kingdom

+44 (0)1732 387 404 • sales@jabberproducts.co.uk

Company Reg: 11228779 • Vat no: 288660454